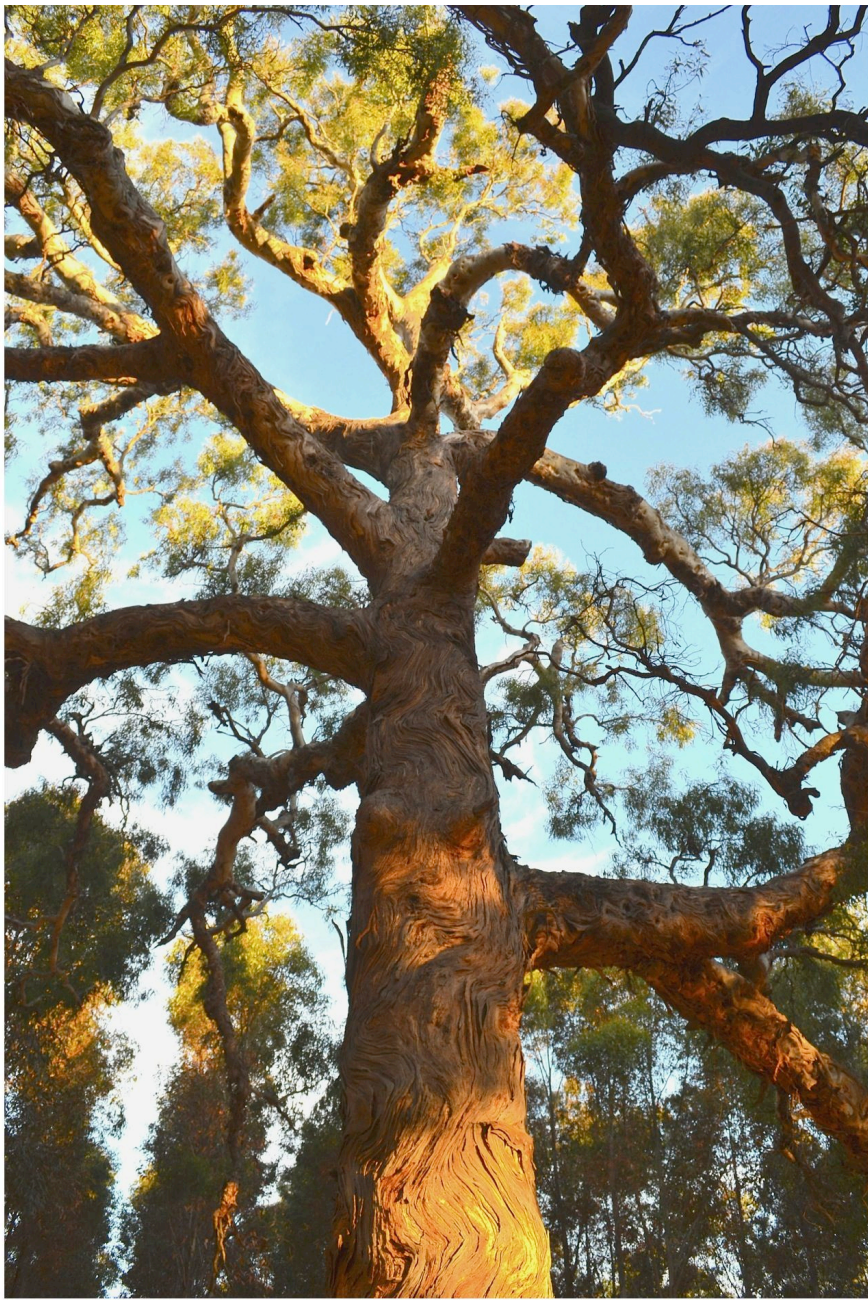




Very Large Old Tree, around 700 years old in path of the Option 1 deviation from the existing highway. Breast height circumference is 7.2 metres. Like most trees of this age, it is hollow-bearing.

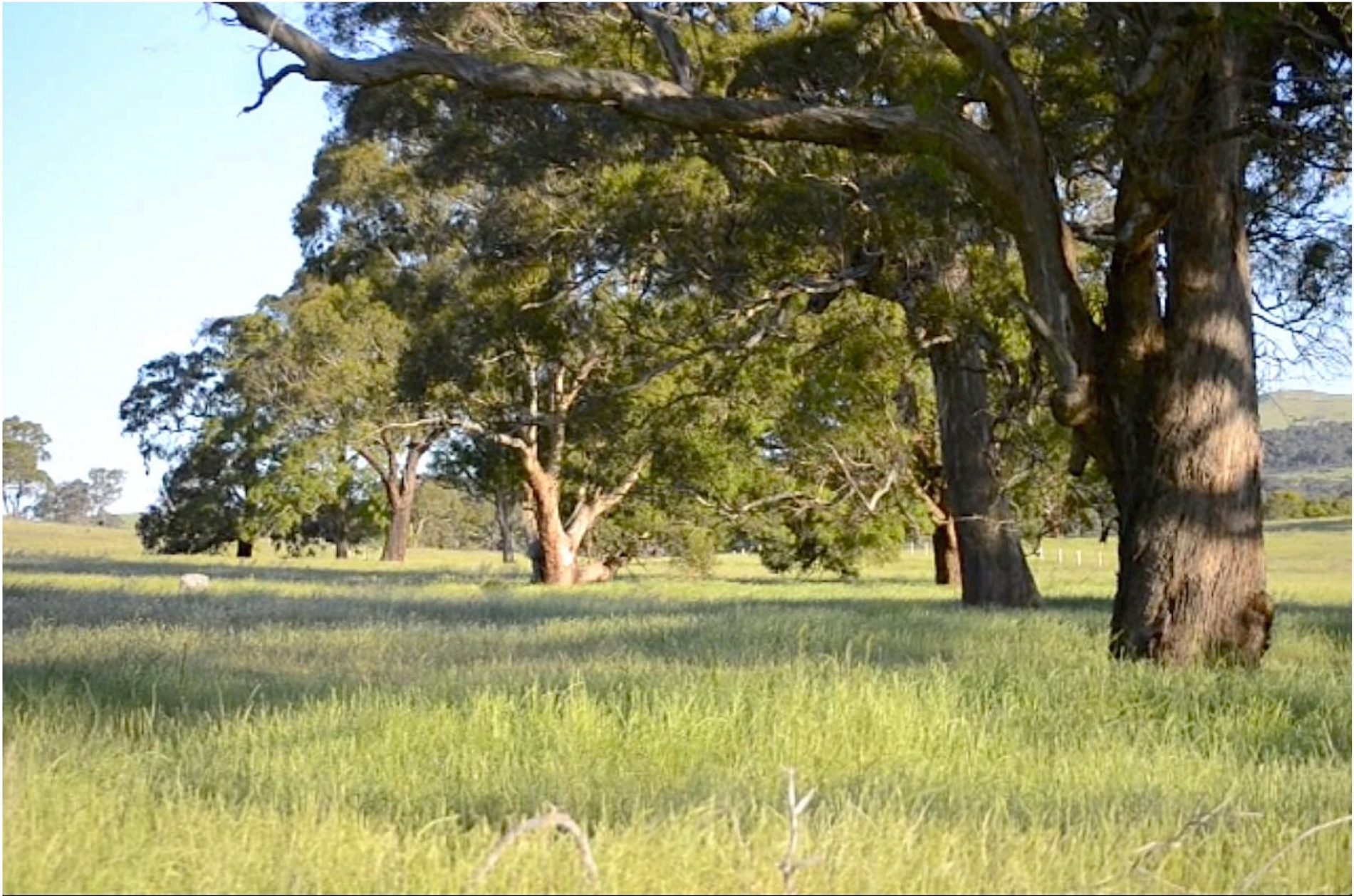


Very Large Old tree in the path of Option 1. This tree has also been classed as a Birthing tree by 2 independent Archeologists in the last 2 months. The tree is registered with the national Trust as a significant tree. Breast height Circumference is 7.4 metres.



Beautiful and rare, hollow-bearing fiddleback Yellow Box, around 300 years old, in the path of Option 1.





Critically endangered Yellow Box Woodland in the path of Option 1. These Large Old trees are all around 300 years old.



Second largest Yellow Gum in Victoria, in the path of the Option 1 deviation. The tree is registered as a significant tree with the National Trust. A black glove on the trunk (left) gives scale.



Large Yellow Box in the path of the Option 1 deviation. Note yellow peg left of trunk.



Scattered Yellow Box trees in the path of Option 1.



Scattered Large Yellow Box trees in the path of Option 1



Extremely old Large Tree that could be protected with slim design specifications on the remainder of the Option 1 route west of Mt Langi Ghiran. This tree may have extra significance as a Birthing tree.